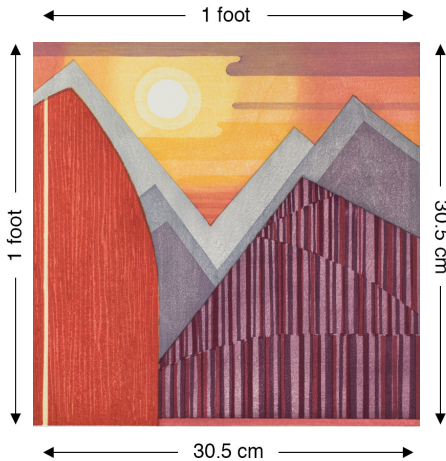


9TH BIENNIAL

FOOTPRINT

International Competition



ENTRY DEADLINE:
MARCH 17, 2024 (VIA CaFÉ)

JURY NOTIFICATION:
APRIL 13, 2024

OPENING RECEPTION:
SUNDAY, JUNE 2, 2024, 2- 4 PM

EXHIBITION:
JUNE 2, 2024 – AUGUST 25, 2024

CALL FOR ENTRIES

ABOUT THE COMPETITION: The Center for Contemporary Printmaking's Footprint International Competition 2024, is an opportunity for the presentation of current trends and innovations in contemporary printmaking within the bounds of the one square foot (12" x 12") configuration. The square format was uncommon in art until the advent of abstraction and presents distinct challenges of composition and expression. Within these precise limits, artists must confront a space and create visual order and formal structure.

ABOUT CCP: The Center for Contemporary Printmaking is a nonprofit printmaking studio and gallery dedicated to the art of the print. At CCP artists can work independently, collaborate with master printers, or enroll in workshops conducted by nationally recognized artists. We provide studios, equipment, and technical expertise. Exhibitions of original prints are held regularly in the gallery, and diverse educational programs are offered for experienced and emerging artists. Footprint International is held every other year, alternating with CCP's International Miniature Print Competition.

IMAGE: Lynita Shimizu, USA, *Sunbreak*, Mokuhanga woodcut, Honorable Mention 2022

Our mission is to support, preserve, and advance the art of original prints. The Center for Contemporary Printmaking is a nonprofit workshop and gallery recognized by the Internal Revenue Service as a 501(c)(3) organization.

All submissions are accepted only
via CaFÉ online system.
(www.callforentry.org)

Eligibility: All fine-art printmaking mediums, including woodcut, intaglio, lithography, screenprint, monotype, and original digital media may be utilized. (No drawings, photographs, or direct reproductions are eligible.)

Image size must be exactly 12 x 12 inches (30.5 x 30.5 cm). Outside dimensions of the printing paper may not exceed 18 x 18 inches (45.7 x 45.7 cm). Paper beyond these dimensions on accepted prints will be trimmed to the dimensions required for the exhibition. Only two-dimensional works will be accepted.

Awards Juror: TBD

Prizes and Awards: \$1,000 in cash prizes and purchase awards will be awarded.

How to Enter: Submissions are accepted only via CaFÉ (www.callforentry.org) by March 17, 2024. There is no additional fee to use the CaFÉ online application system. All entries must be uploaded using this online system. Please do not upload digital images that contain borders or text info that is not part of the original work.

Entry Fee: The submission fee is \$40 for up to two entries. CCP members will receive a 50% discount code. The fee must be paid online via the CaFÉ online application system. Artists interested in becoming a CCP member can sign up online at :
<https://contemprints.org/support/membership>

ONLY WORKS SELECTED BY THE JUROR NEED TO BE DELIVERED—Please do not mail works unless notified.

Works Accepted: The result of this competition is an in-person exhibition of selected prints in our Grace Ross Shanley Gallery. Artists selected will be provided with details for delivery of work **WITHIN THEIR JUROR NOTIFICATION.**

Sales: All prints must be for sale. CCP will retain a commission of 50% on all works sold. Artists may choose to donate all proceeds to support CCP programs.

Notification: Accepted artists will be notified via e-mail by April 13, 2024.

Liability: Although reasonable care will be given to work submitted to this exhibition, CCP is not responsible for loss or damage to entries. Entry by artist confirms acceptance of these conditions.