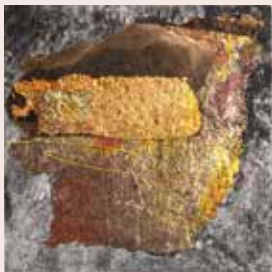


# Call For Entries

## 14th Biennial International Miniature Print Competition 2023

Center for  
Contemporary  
Printmaking



ENTRY DEADLINE: Saturday, March 11, 2023 (POSTMARK)  
EXHIBITION DATES: JUNE 4 – AUGUST 20, 2023 | OPENING RECEPTION: SUNDAY, JUNE 4, 2023

### EXHIBITION JUROR

**Ksenia Nouril** is a Philadelphia-based art historian and curator with in-depth knowledge of global post-war and contemporary art practices, and has a proven track record in organizing and implementing impactful cross-cultural programs for diverse audiences. Ksenia was the Jensen Bryan Curator at The Print Center in Philadelphia, and is now the Gallery Director for the Art Students League of New York. Ksenia Nouril received her PhD in Art History from Rutgers, The State University of New Jersey, New Brunswick in 2018.

### ABOUT THE 14th BIENNIAL INTERNATIONAL MINIATURE PRINT EXHIBITION

The Center for Contemporary Printmaking is delighted to announce the 14th Biennial International Miniature Print Competition and Exhibition. This juried competition and exhibition, limited to works that are no more than four square inches (25.8 square cm), encourages artists to explore the miniature print format and provides them with an opportunity for exhibition. It is also an opportunity for artists and the public to view the current concerns of printmakers from around the world. Since its inception in 1997, the competition has attracted entries by more than 1500 artists from around the world and across the U.S.A.

The International Miniature Print Competition is held every other year, alternating with CCP's other biennial, FOOTPRINT International (for prints measuring exactly 12 x 12 in. square).

### ABOUT CCP

The Center for Contemporary Printmaking is a nonprofit printmaking studio and gallery dedicated to the art of the print. At CCP artists can work independently, collaborate with master printers, or enroll in workshops conducted by nationally recognized artists. We provide studios, equipment, and technical expertise. Exhibitions of original prints are held regularly in the gallery, and diverse educational programs are offered for experienced and emerging artists.

*LEFT (from the top):* **Sinclair Ashman**, England, *Wish I*, 2021, Collagraph with chine collé, leaf and thread;  
**Takako Tamura**, Japan, *Rhythm 1*, 2021, Collagraph monoprint; **Anna Trojanowska**, Poland, *Gravity - 1*, 2021, Lithograph;  
**Amy Sands**, MN, USA, *Constellation LXXI*, 2021, Screenprint with stencil and hand coloring.  
*RIGHT (from the top):* **Susan Martin**, NC, USA, *Flotation Device III*, 2021, Drypoint with hand coloring and thread;  
**Lujiang Li**, NY, USA, *Flying Butterfly*, 2021, Lithograph and screenprint; **Fanny Bazille**, France, *Wood II*, 2021, Engraving;  
**DeAnn L. Prosia**, NJ, USA, *Towers Three*, 2021, Etching.

MATHEWS PARK | 299 WEST AVENUE | NORWALK, CT 06850 | 203.899.7999 | WWW.CONTEMPRINTS.ORG

Our mission is to support, preserve, and advance the art of original prints. The Center for Contemporary Printmaking is a nonprofit workshop and gallery recognized by the Internal Revenue Service as a 501(c)(3) organization.

# 14th Biennial International Miniature Print Competition 2023

**Entry Deadline:** Saturday, March 11, 2023 (POSTMARK) **Jury Notification:** Friday, April 21, 2023  
**Exhibition Dates:** June 4 – August 20, 2023

## Procedures

Please send in one package:

- Signed entry form
- Original prints with attached identification labels
- Entry fee
- Self-addressed, return package for prints
- Return postage for United States based artist entries

**Eligibility:** All fine art printmaking mediums, including woodcut, intaglio, lithography, silkscreen, monotype, and original digital media (No drawings, photographs, or direct reproductions are eligible.) Prints may not exceed a total image area of 4 square inches (25.8 square cm), e.g. 1 x 4 in, 2 x 2 in, 1-1/2 x 2-2/3 in, etc. Outside dimensions of the printing paper may not exceed 8 x 10 in. (20.3 x 25.4 cm). Paper beyond these dimensions on accepted prints will be trimmed to the dimensions required for the exhibition. Only two-dimensional works will be accepted.

## Size Requirements

**Image Size:** Prints may not exceed a total image area of 4 square inches (25.8 square cm). e.g. 2 x 2 in, 1 x 4 in, 1-1/2 x 2-2/3 in, etc. (Prints may be smaller than four square inches)

**Paper Size:** No larger than 8 x 10 inches (20.3 x 25.4 cm)

**Package Size:** No larger than 9 x 14 inches (22.9 x 35.5 cm)

**How to Enter:** Complete the entry form and attach an identification label to the back of each print. *U.S. based artist entries must include return postage.* Send these along with the entry fee and return mailing package to:

ATTN: 2023 Miniprint Exhibition  
Center for Contemporary Printmaking  
Mathews Park, 299 West Avenue  
Norwalk, CT 06850, U.S.A.

**Notification:** Artists selected for the exhibition will be notified via e-mail by April 21, 2023. The names of these artists will also be posted on the CCP website, [www.contemprints.org](http://www.contemprints.org)

**Pricing Your Work:** The submitting artist sets the sale price (see entry labels). CCP will not alter the sale price without consulting with the artist. Experience has shown that works priced competitively, especially those below \$100, return the highest sales. Artists are encouraged to price their works sensibly with respect to the market for small prints of this kind.

1" x 4"

2" x 2"

1.5" x 2.66"

**Possible formats: Total image area cannot exceed 4 square inches (25.8 square cm)**

**Entry Fee:** Each artist may submit up to three prints, for a fee of \$30 for CCP members, \$40 for non-members, and \$50 for international entries. (International entry fee includes return postage). Two additional entries will be accepted for an additional fee of \$10 each. The fee must accompany the entry form and must be in U.S. dollars only, in the form of a check or money order made payable to Center for Contemporary Printmaking. (Any currency other than U.S. dollars will not be accepted.) Do not send cash. Entry fees may also be paid through PayPal: send to [jakers@contemprints.org](mailto:jakers@contemprints.org). Prints donated in lieu of payment of the entry fee will not be accepted. Entries not accompanied by fees become the property of CCP.

Artist membership to CCP is \$75 per year; please contact CCP for information.

Discounted Student Group Rates will be available for groups of 3 or more students. See the Miniprint Call for Entry page on our website or call 203-899-7999 for more information.

**Prizes and Awards:** Cash prizes and purchase awards will be selected by the juror.

**Sales:** All prints must be for sale. CCP will retain a commission of 50% on all works sold.

**Duplicate Prints:** You may submit additional impressions of entered images to increase the opportunity for sales. Duplicate prints do not count as separate entries.

**Delivery of Works:** All entries must be sent flat and unmounted and must include a self-addressed return package sized to fit the prints. Outside package dimensions may be no larger than 9 x 14 inches (22.9 x 35.5 cm). Prints received without a return package and postage become the property of CCP.

**Return of Works:** Unsold works will be returned by mail by the end of 2023, or later if additional exhibition opportunities are secured for the show.

**Liability:** Although all reasonable care will be given to work submitted to this exhibition, CCP is not responsible for loss or damage to entries. Your signature on the entry form confirms your acceptance of these conditions.

**Questions:** Tel. 203-899-7999  
Email: [info@contemprints.org](mailto:info@contemprints.org) | Online: [www.contemprints.org](http://www.contemprints.org)

## International Miniature Print Competition 2023 ENTRY FORM

Please fill out all forms and mail with prints, entry fee, and self-addressed return packaging to CCP.

ARTIST NAME

ADDRESS

CITY/STATE/ZIP

PHONE

E-MAIL

NATIONALITY

PLACE OF BIRTH (CITY/COUNTRY)

Entry fee enclosed

PayPal Payment

(\$30 for CCP members, \$40 for non-members, \$50 for international)  
List each entry by title, medium and price:

1 \_\_\_\_\_

2 \_\_\_\_\_

3 \_\_\_\_\_

LIABILITY: Although all reasonable care will be given to work submitted to this exhibition, CCP is not responsible for loss or damage to entries. Entry by artist confirms acceptance of these conditions.  
REPRODUCTION: The Center for Contemporary Printmaking assumes the right to reproduce images of works for publicity purposes.

Signature (required) \_\_\_\_\_

**Miniature Print Entry LABEL 1** Attach identification label to back of print

Artist \_\_\_\_\_

Title \_\_\_\_\_ Date of completion \_\_\_\_\_

Medium \_\_\_\_\_ Edition number \_\_\_\_\_

Image measurements \_\_\_\_\_ Price \$ \_\_\_\_\_

**Miniature Print Entry LABEL 2** Attach identification label to back of print

Artist \_\_\_\_\_

Title \_\_\_\_\_ Date of completion \_\_\_\_\_

Medium \_\_\_\_\_ Edition number \_\_\_\_\_

Image measurements \_\_\_\_\_ Price \$ \_\_\_\_\_

**Miniature Print Entry LABEL 3** Attach identification label to back of print

Artist \_\_\_\_\_

Title \_\_\_\_\_ Date of completion \_\_\_\_\_

Medium \_\_\_\_\_ Edition number \_\_\_\_\_

Image measurements \_\_\_\_\_ Price \$ \_\_\_\_\_